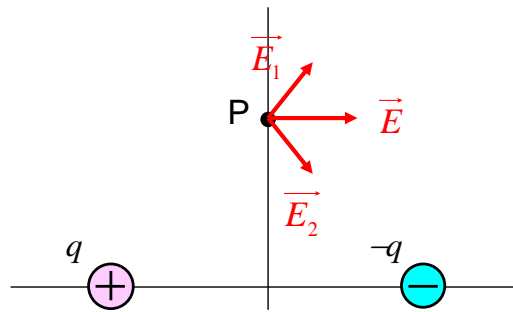


小テスト02解答

Q1 $E = k \frac{q}{r^2} = 4.0 \times 10^3 \text{ V/m}$

Q2 $F = qE = 5.0 \times 10^{-6} \text{ N}$

Q3



$$E_1 = E_2 = k \frac{2.0 \times 10^{-6}}{\sqrt{2}^2} = 9.0 \times 10^3 \text{ V/m}$$

$$E = \sqrt{2}E_1 = 1.3 \times 10^4 \text{ V/m}$$

Q4

